

VIRGO[®]
LAMINATES

LIVE
Y O U R O W N
STORY



LIVE Y O U R O W N STORY

Our true personal power is generated from within.
We can fill a space with anything we want because
we have the power to create our own beautiful world.
A kind of world that demonstrates our own art of
individuality, celebrates our unorthodox choices and
creates a natural state of ease.

Partner with your soul to influence your experience in
your own little world that narrates the most beautiful
story ever told **your own story**, and you happily live
in it. No rules, no limits. A great life is uninterrupted.



The Virgo Group of companies constantly looks out for innovation and challenges in industry which it meets with its passion to excel in whatever it does. Across all its group companies, it maintains a philosophy of reaching out to perfection, no matter what it takes, whether high-end resources or a superlative manpower.

With a team size of over 1000+ employees, Virgo Group employees all over the world continue to work together in a rewarding environment to achieve the objectives the company was founded upon. Long before there were government-issued regulations concerning the protection of the environment, Virgo Group had already invested in Earth Friendly initiatives. These included reforestation programmes and elimination of the use of tropical woods and harmful, ozone-damaging chemicals. Weighing its actions on a philosophical pedestal, Virgo today has evolved into a firm that has been generating optimum profit through total satisfaction of customers, suppliers, employees and society. A recipient of the ISO 14001 certifications, Virgo continues to invest in new technologies that can reduce the environmental impact of its manufacturing processes. Why?

Because it is the right thing to do.

VIRGO[®]
LAMINATES

Project: The Commons Apartment
Interior Designer: UPSTAIRS_

Textures by Virgo® Laminates



Dry Matt (DM)



Super Matt (SMT)



Gloss (SHG)



Shine (SH)



Suede (SF)*



Techno (TN)



Leather (LA)



Mesh (MH)



Cane (CE)



Natural Veneer (NV)*



Italian Ash (IA)*



Casa (CS)*



Gogo (GO)*



Jungle Wood (JW)*



Zabrino Vericle (ZBVT)*



Horizontal (HZ)*



Swiss Cotton (SC)*



Cement Stone (CSS)*



Stone (ST)*



Concrete (CN)*



Syca (SYCA)*

This page features textures available for customisation.
Selected items are available with stocks in black.
* Available in other colours, Black is available on indent basis.

Textures by Virgo® Laminates SYNCRO Collection



Canyon Oak (CO)



Flat Oak (FO)*



Port Wood (PW)*



Crown Ash (CA)*



Fresh Elm (FE)



Plush Ash (PA)*



Plank Timber (PT)*

This page features textures available for customisation.

Selected items are available with stocks in black.

* Available in other colours, Black is available on indent basis.







Solid Colours in Dry Matt

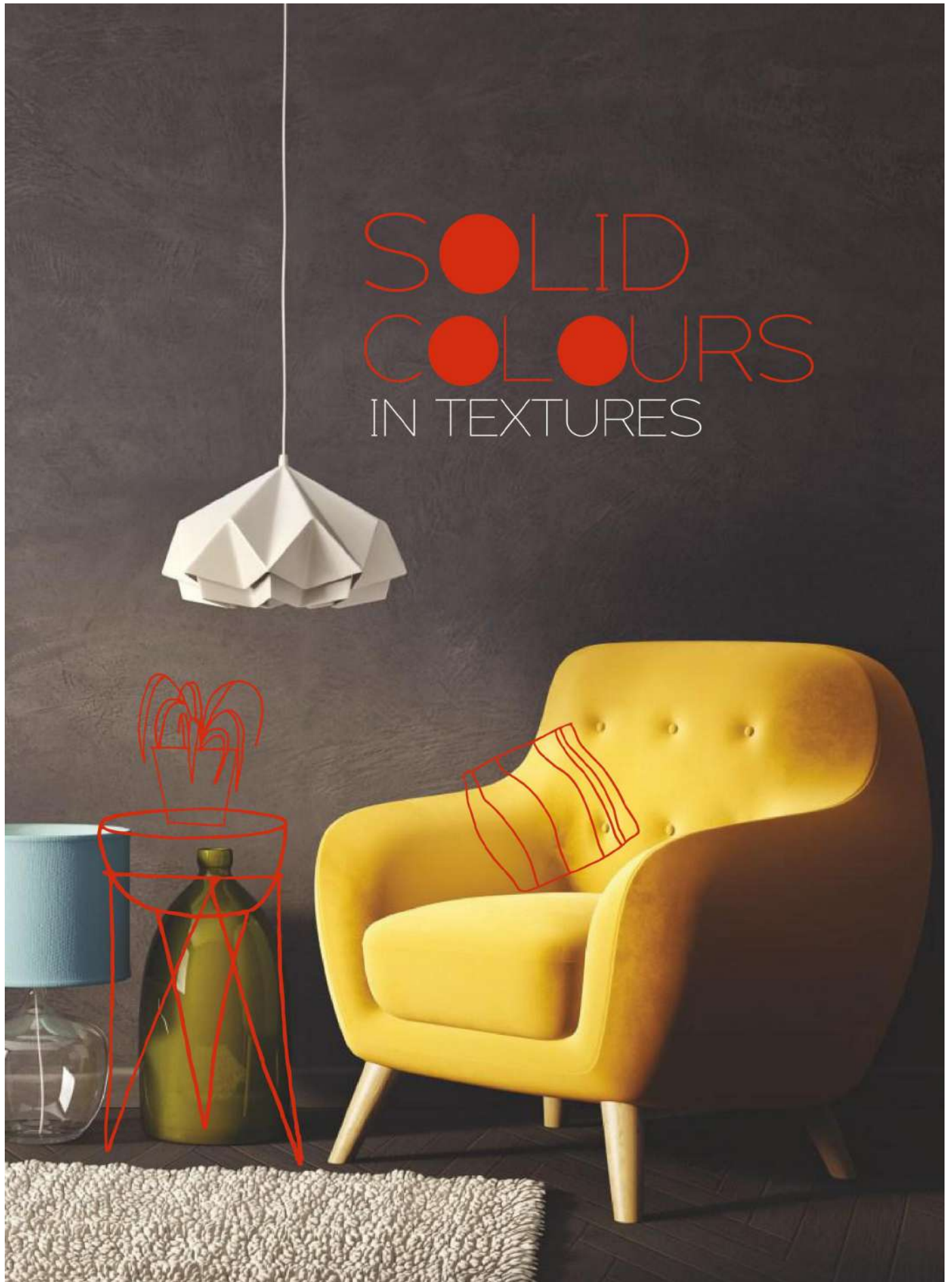
DM 1209 S Super White	DM 1309 S Prime White	DM 5106 S Soft White	DM 5104 S Pure White	DM 5105 S Snow White	DM 1409 S Frosty White	DM 1303 S Techno Ivory
DM 1942 S Cool White	DM 1944 S Mocha	DM 1709 S New Frosty White	DM 1941 S Neo Cool White	DM 1945 S Sandal	DM 1946 S Sunset Point	DM 1947 S Aspen Gold
DM 8108 S Oyster	DM 1929 S Paris Sutte	DM 1938 S Pumice	DM 1934 S Mission White	DM 1937 S Kashmir	DM 8106 S Camel	DM 5102 S Pecan
DM 1101 S Grey	DM 8103 S Cool Grey	DM 1001 S Pearl Grey	DM 1931 S Paris Wood	DM 1935 S Fog	DM 1923 S Silk Green	DM 1002 S Coffee
DM 8105 S Ash Grey	DM 8107 S Jet Grey	DM 8104 S Pebble	DM 1936 S Graphite	DM 1922 S Dark Green	DM 5101 S Anchor	DM 1921 S Chocklet



Solid Colours in Dry Matt

DM 8102 S Blush	DM 1505 S Strawberry	DM 1504 S Rosy Pink	DM 1055 S Mash	DM 1045 S Blood Red	DM 1245 S Bright Red	DM 1098 S Poppy	DM 1005 S Maroon
DM 1027 S Glorious Green	DM 1067 S Sambre	DM 1527 S Olive Green	DM 1517 S Para Green	DM 1507 S Super Green	DM 1037 S Parrot Green	DM 1047 S Bottle Green	DM 1057 S Army Green
DM 5103 S Powder Blue	DM 1018 S Misty Blue	DM 1028 S Parker Blue	DM 1038 S Royal Blue	DM 1048 S Stain Blue	DM 1058 S Chel Park Blue	DM 1068 S Navy Blue	
	DM 1063 S Light Yellow	DM 1073 S Golden Yellow	DM 1083 S Marigold	DM 1525 S Dim Orange	DM 1025 S Orange	DM 1035 S Malta	
		DM 1078 S Purple	DM 1088 S Lavender	DM 1509 S Lilac	DM 1075 S Dark Crouch	DM 1006 S Black	







Solid Colours in Super Matt



SMT 5106 S **NEW**
Soft White



SMT 1944 S
Mocha



SMT 8108 S **NEW**
Oyster



SMT 1938 S
Pumice



SMT 1931 S
Paris Wood



SMT 1934 S
Mission White



SMT 1937 S
Kashmir



SMT 1923 S **NEW**
Silk Green



SMT 1936 S **NEW**
Graphite



SMT 1006 S **NEW**
Black

Solid Colours in Mesh



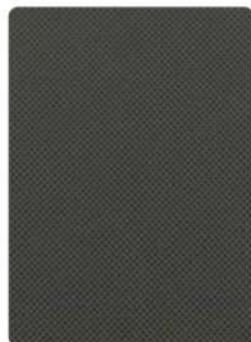
MH 8104 S **NEW**
Pebble



MH 1936 S **NEW**
Graphite



MH 1006 S **NEW**
Black



MH 5101 S **NEW**
Anchor



MH 5102 S **NEW**
Pecan



Solid Colours in Gloss



SHG 1309 S
Prime White



SHG 1409 S
Frosty White



SHG 1942 S
Cool White



SHG 1001 S
Pearl Grey



SHG 1936 S
Graphite



SHG 1934 S
Mission White



SHG 1938 S
Pumice



SHG 1937 S
Kashmir



SHG 1935 S
Fog



SHG 1006 S
Black

Solid Colours in Shine



SH 1409 S
Frosty White



SH 1923 S
Silk Green



SH 1101 S
Grey



SH 1006 S
Black



SH 1245 S
Bright Red



Solid Colours in Fresh Elm and Canyon Oak



FE 1006 S
Black



NEW CO 1006 S
Black *NEW*

Solid Colours in Leather



LA 1409 S
Frosty White



LA 1923 S
Silk Green



LA 1002 S
Coffee



LA 1006 S
Black

Solid Colours in Techno



TN 1934 S
Mission White



TN 1937 S
Kashmir



TN 1001 S
Pearl Grey



TN 1935 S
Fog



TN 1936 S
Graphite



TN 1939 S
Nocturne



TN 1006 S
Black

WOOD GRAINS IN SYNCRO





Wood Grains in Syncro Plank Timber



PT 6981 W
Alava



PT 6982 W
Segovia



Virgo Syncro

Syncro wood grains are a collection of specially crafted embossing on the surfaces of the laminates that matches the wood grain design, giving the laminates a more natural, elegant and realistic look. The textures harmonize with the crowns, grooves, cathedrals and knots of the wood pattern, creating a surface that looks and feels like real timber, but with the ease of maintenance of a High Pressure Laminate. Each grain pattern is a unique masterpiece of design, texture and splendour.



Wood Grains in Syncro
Fresh Elm



FE 6961 W
Naturale




FE 6962 W
Macchiato



FE 6963 W
Fumo



Anything
b u t
ordinary

 Best viewed in large scale

07



Wood Grains in Syncro Plush Ash



PA 6971 W
Sitka Ash



PA 6972 W
Houston Ash



PA 6973 W
Memphis Ash



Wood
designs
t h a t
inspire



Wood Grains in Syncro Crown Ash



CA 6911 W
White Ash



Indulge
i n a n
ambience
of
sophistication



CA 6913 W
Symphony Ash



Project: Mona Lisa Bookstore
Client: Mona Lisa Sdn Bhd
Interior Designer: Ooi Design & Associates, Malaysia



CA 6912 W
European Ash



Best viewed in large scale



Wood Grains in Syncro Canyon Oak



CO 6941 W
Grand Petraea



CO 6942 W
Nature Petraea



CO 6943 W
Burnt Petraea



Classic
Oak
w i t h a
contemporary
attitude

10



Best viewed in large scale

Wood Grains in Syncro Flat Oak



FO 6903 W
Bleached Oak



FO 6901 W
American Oak



FO 6902 W
Fume Oak



Stunning
i n i t s
simplicity

 Best viewed in large scale

11



Wood Grains in Syncro

Port Wood



PW 6951 W
Omni Wood



PW 6953 W
Amber



PW 6952 W
Amazon



Amalgamation
of
elegance
and
Luxury



WOOD GRAINS





Wood Grains

Chestnut



NV 5624 W
Platinum

▶ **NEW**



NV 5633 W
Silverbrook

▶ **NEW**



NV 5625 W
Crestwood

▶ **NEW**



NV 5626 W
Cayman

▶ **NEW**

13



Best viewed in large scale

Wood Grains



Oak



NV 5628 W
Emory Oak

NEW



NV 5629 W
Laurel Oak

NEW



NV 5636 W
Valley Oak

NEW



NV 5639 W
Willow Oak

NEW



NV 5630 W
Muller Oak

NEW

Elm



NV 6496 W
Otto Elm

NEW



NV 6495 W
Konrad Elm

NEW



NV 6494 W
Austin Elm

NEW

Ash



NV 6613 W
English Ash

NEW



NV 7607 W
Bonita Ash

NEW



NV 7608 W
Oregon Ash

NEW



NV 6614 W
Velvet Ash

NEW

Best viewed in large scale



Wood Grains

Teak



DM 6406 W
Gana Teak



DM 6403 W
Coastrica Teak



JW 6758 W
Canyon Zephyr Dark



DM 6405 W
Burma Teak



NV 8434 W
Palasanto



NV 8433 W
Palasanto Teak



NV 6400 W
Sham Teak



CS 7903 W
Bianco Teak



CS 7904 W
Hickory Teak

Saw Cut



NV 8446 W
Ripped Wood



SC 7149 W
Smoke Saw Cut



SC 7150 W
Saw Cut

15

Best viewed in large scale

Wood Grains



Elm



DM 7604 W
Sapporo Elm



DM 7605 W
Gifu Elm



DM 6476 W
Zerino Elm



DM 8473 W
Coris Elm



DM 8472 W
Durgish Elm



DM 7660 W
Wishaw Elm



DM 7658 W
Glasgow Elm



DM 7659 W
Irvine Elm



CS 7656 W
Bruno Elm



CS 7655 W
Grigio Elm



CS 7657 W
Marrone Elm

Best viewed in large scale



Wood Grains

Oak



DM 6412 W
Zobi Oak



DM 6411 W
Rost Oak



DM 6410 W
Resara Oak



DM 5621 W
Vanila Groven Oak



DM 5622 W
Groven Oak



NV 6731 W
San Natural



NV 6536 W
Drik Oak



NV 6415 W
Sino Oak



NV 6417 W
Sero Oak



NV 6416 W
Mayo Oak



NV 6418 W
Zezar Oak



Wood Grains



Ash



CSS 931 W
Fumed Willow Light



SMT 931 W
Fumed Willow Light



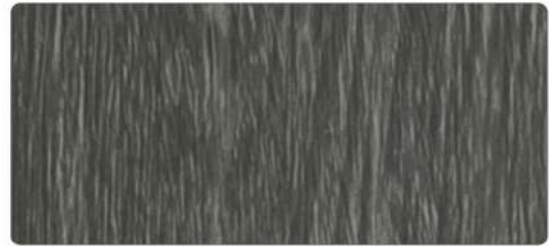
CSS 932 W
Fumed Willow Dark



SMT 932 W
Fumed Willow Dark



CS 6526 W
White Tandy



CS 6527 W
Slate Tandy



IA 6492 W
Pearl Ash



IA 6491 W
Cream Ash



IA 9911 W
Beafort Ash



Chestnut



CS 8461 W
Clear Chestnut



GO 8461 W
Clear Chestnut



CS 8462 W
Chest Nut



GO 8462 W
Chest Nut

Best viewed in large scale



Wood Grains

Walnut



DM 6453 W
Rivira Walnut



DM 6452 W
Marcello Walnut



DM 6451 W
Jamaica Walnut



DM 6454 W
Balmy Walnut



NV 5662 W
Veltech Walnut



NV 5664 W
Tulip Walnut



NV 5663 W
Corell Walnut



NV 5661 W
Scara Walnut



NV 5761 W
Noce



NV 5811 W
Classic Walnut



IA 5808 W
Indian Walnut



NV 8496 W
Ruza Walnut



NV 7506 W
Sarin Walnut



Wood Grains



Walnut



NV 7901 W
Turin Noce



NV 7902 W
Verona Noce



DM 7663 W
Morelia Walnut



DM 7662 W
Sallilo Walnut



DM 7661 W
Tampico Walnut

Cyprus



JW 5600 W
Bleached Cyprus



NV 5805 W
Cyprus Cedar



NV 5804 W
Cyprus Dyed



GO 5804 W
Cyprus Dyed

Dark Woods



NV 5754 W
Splendura



NV 6732 W
Sangray



NV 9914 W
Occer Saped Brown

Best viewed in large scale

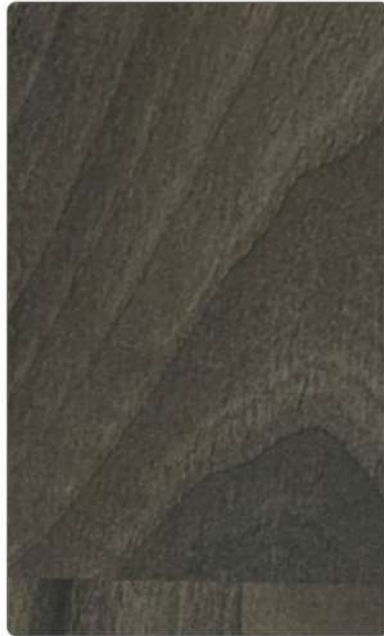


Wood Grains

Parquet



NV 7602 W
Natural Parquet



NV 7603 W
Walnut Parquet



Fusion



JW 8456 W
Koris Wood



JW 8457 W
Gamoni Wood



SHG 7130 W
Goyarambas



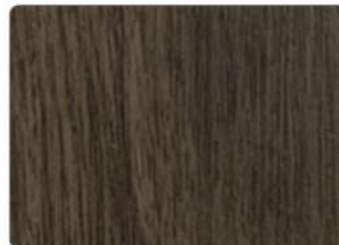
SHG 7129 W
Fio Rambas



CS 6467 W
Zigo Teak



CS 6466 W
Penga Teak



ZBVT 8464 W
Zoriasta Teak



ZBVT 8468 W
Comby Walnut



Wood Grains



Cane



DM 8442 W
Oriental Cane



DM 8441 W
Fume Cane



GO 6881 W
Tulip Dyed



GO 6882 W
Tulip Bleach



DM 8418 W
Seta Oak



DM 8416 W
Meta Oak

Beech



SF 5029 W
Milan Beech



SF 5116 W
Marin Beech



SF 5507 W
Bavarian Beech



SF 5504 W
Cherry Bavaria



Wood Grains

Horizontal



HZ 6504 W
Sras Bargish Oak



HZ 5649 W
Lino Oak HZ



HZ 6502 W
Satus Bargish Oak



HZ 5648 W
Costa Oak HZ



HZ 6501 W
Bargish Oak



HZ 5646 W
Tulip Oak HZ



HZ 6503 W
Pato Bargish Oak



HZ 5647 W
Dalton Oak HZ

Wood Grains



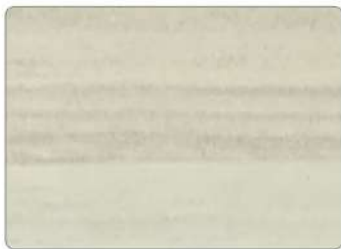
Horizontal



DM 6302 W
Artcasia



DM 6303 W
Artcasia Brown



DM 5640 W
Sculpt Nogal



DM 5643 W
Misty Nogal



DM 5641 W
Balmy Nogal



DM 5642 W
Mastic Nogal



DM 8413 W
Rami Ash Natural



DM 8411 W
Rami Ash



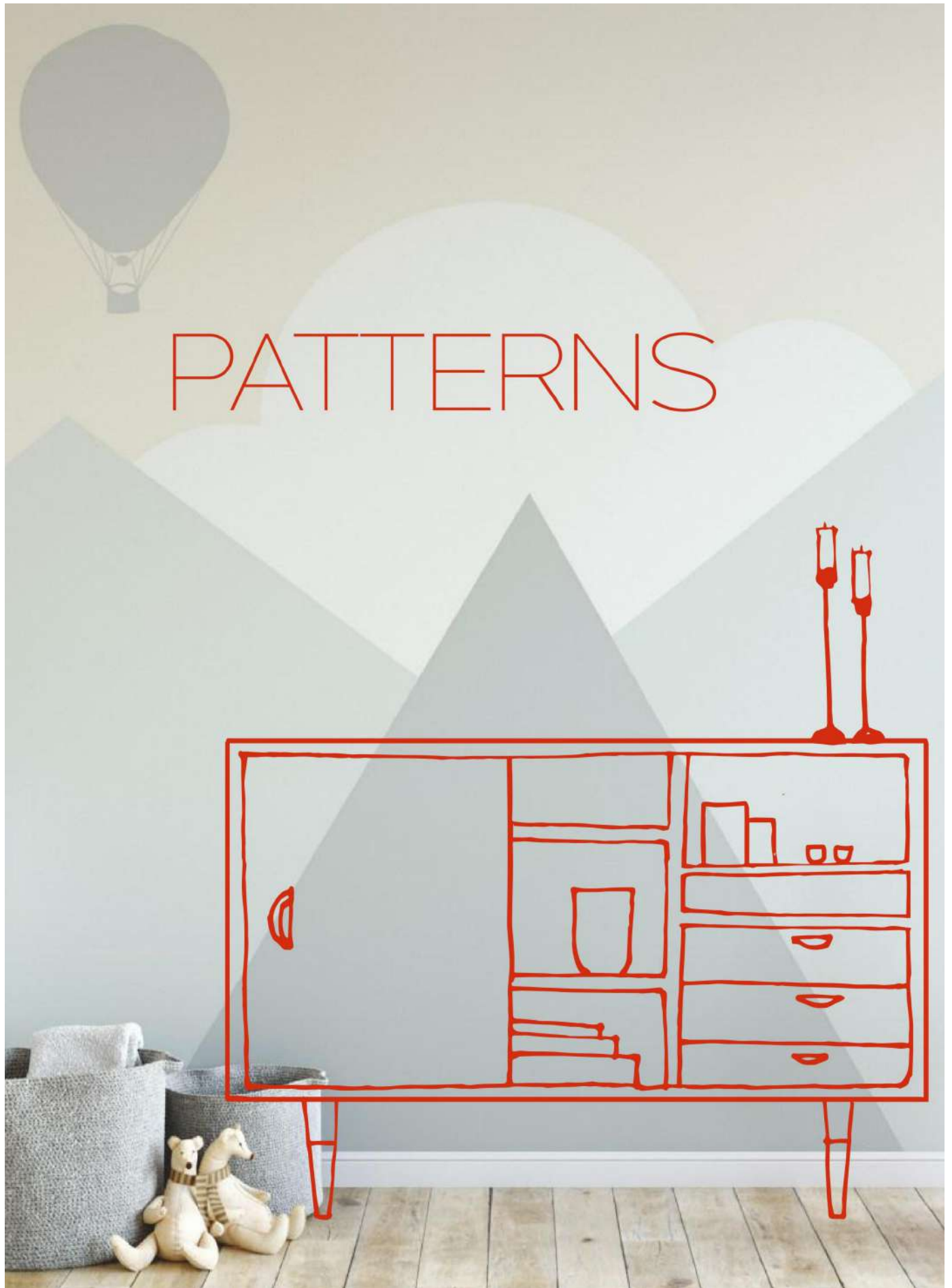
DM 8412 W
Rami Ash Brown



Project: AMES Hotel Melaka
Client: Sheng Tai International Sdn Bhd
Interior Designer: ORB Associates

Best viewed in large scale







Patterns

Marble



SMT 6323 P
Maycair Marbal

NEW



SHG 6323 P
Maycair Marbal



SMT 6336 P
Black Greystone

NEW



SHG 6336 P
Black Greystone

NEW

25

Best viewed in large scale

Patterns



Marble



SMT 6331 P
Tortilla Veneto

NEW



SHG 6331 P
Tortilla Veneto

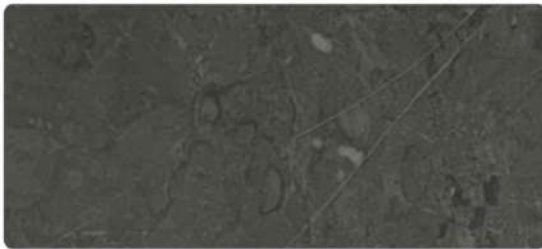


SMT 6332 P
Crema Veneto

NEW

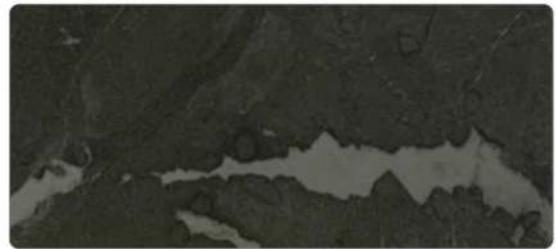


SHG 6332 P
Crema Veneto

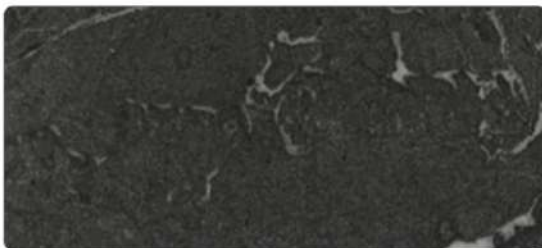


SMT 6333 P
Ossidi Veneto

NEW



SHG 6333 P
Ossidi Veneto



SMT 6334 P
Stoffa Veneto

NEW



SHG 6334 P
Stoffa Veneto



Best viewed in large scale



Patterns

Stone



ST 6461 P
Davido



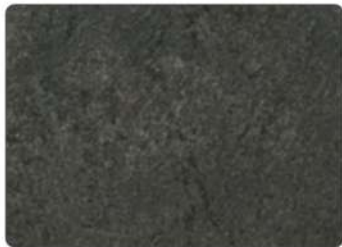
ST 6462 P
Parido



ST 6877 P
Cement Stone



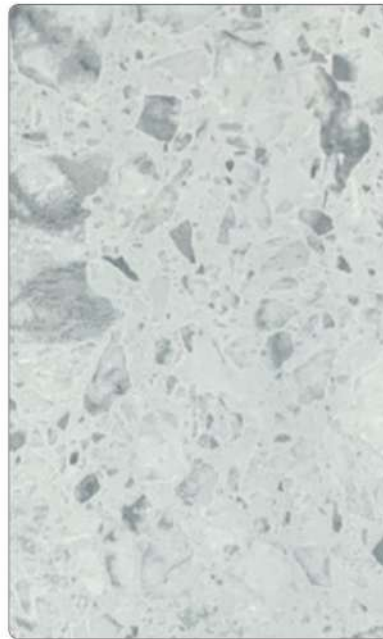
ST 6879 P
Portoro



ST 6880 P
Black Portoro



ST 6878 P
Brown Cement Stone



SMT 6408 P
Silver Terrazzo



SMT 6409 P
Grey Terrazzo



27



Best viewed in large scale

Patterns



Concrete



NV 5603 P
Bianco Kamala



CN 6483 P
Concrete



NV 5602 P
Natural Kamala



CN 6481 P
Cement Concrete



NV 5601 P
Bruno Kamala



CN 7504 P
Natural Concrete



CN 7503 P
Expose Concrete



CN 7501 P
Grey Concrete



 Best viewed in large scale



Patterns

Fabric



SYCA 6446 P
Pure Silk



SYCA 6447 P
Silk



DM 6432 P
Kesaco Fabric



DM 6431 P
Zyoo Fabric



DM 6434 P
Rosco Fabric

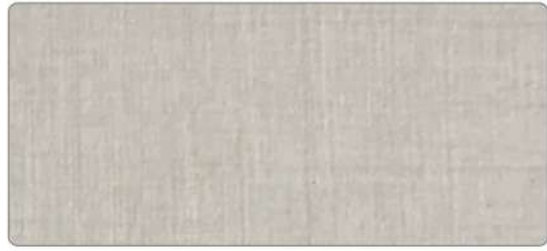
Patterns



Fabric



SC 6533 P
Winter Fabricano



SC 6873 P
Sandy Fabricano



SC 6531 P
Stoffa Fabricano



SC 6532 P
Black Fabricano



NV 6428 P
Denim Beige



NV 6426 P
Denim Brown

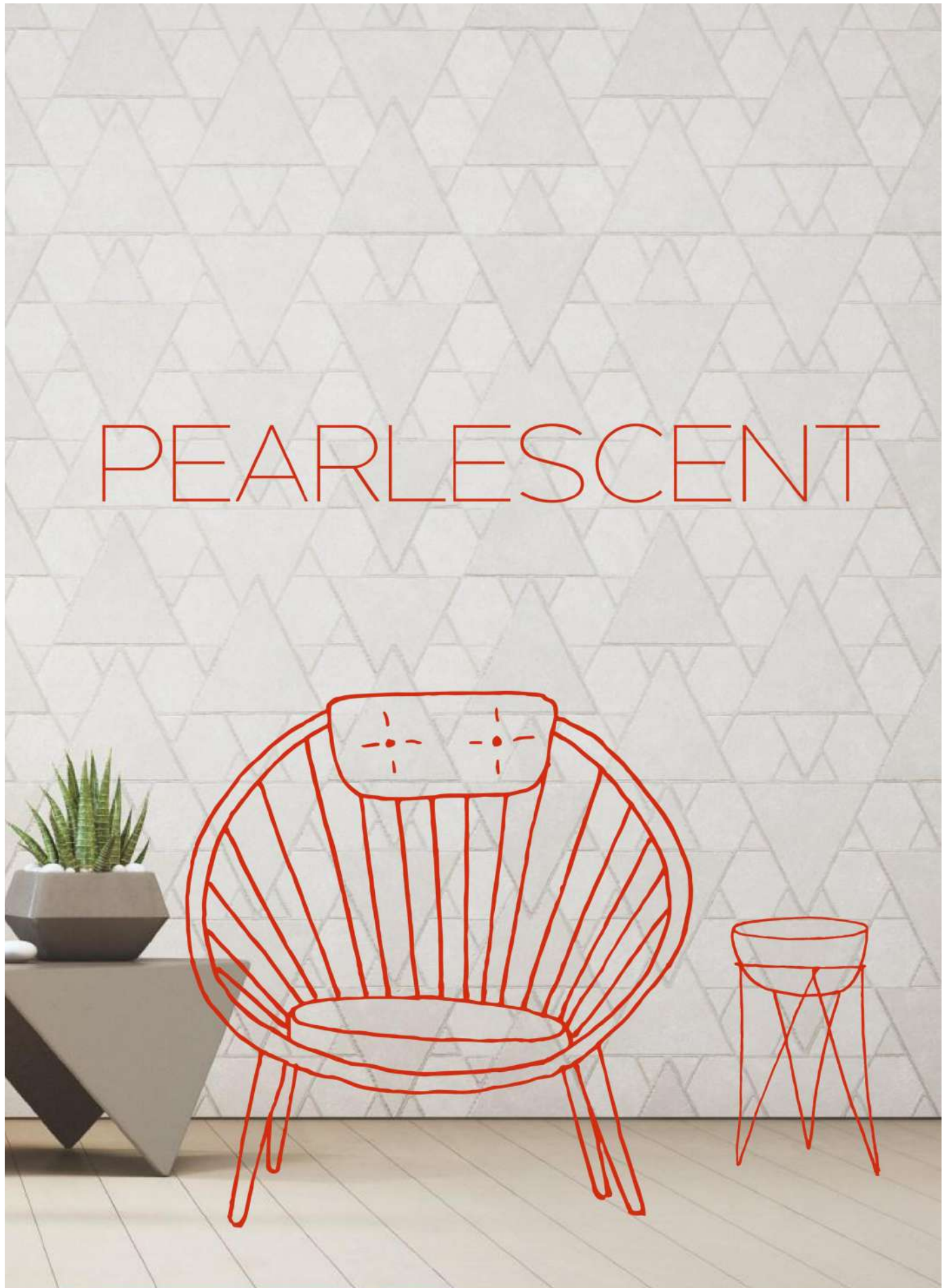


NV 6427 P
Denim Blue



NV 6471 P
Kekmi Fabric







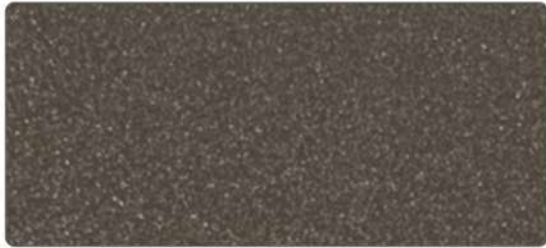
Pearlescent



GLX-1 1409 S
Frosty White



GLX-1 1303 S
Techno Ivory



GLX-1 1923 S
Silk Green



GLX-1 1006 S
Black



SF 9977 P
Pearl Bronze



SHG 9977 P
Pearl Bronze



SF 9978 P
Pearl Black



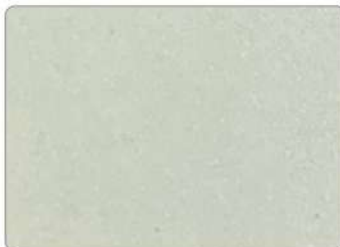
SHG 9978 P
Pearl Black



SF 9976 P
Pearl Silver



SHG 9976 P
Pearl Silver



SF 9975 P
Pearl White



SHG 9975 P
Pearl White



CANE



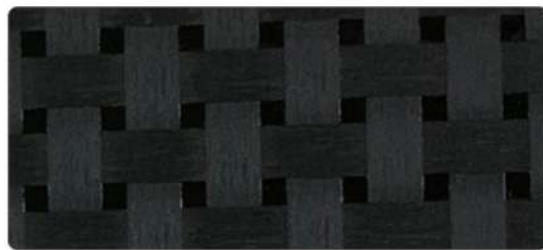
Cane



CE 6319 P
Fabricano



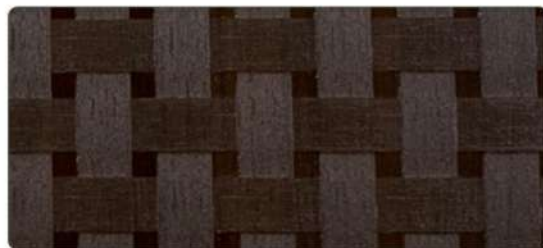
CE 1409 S
Frosty White



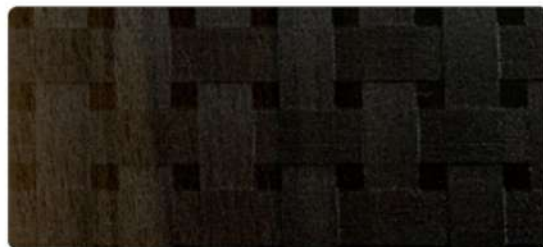
CE 1006 S
Black



CE 6316 P
Sandy Fabricano



CE 5809 W
Fume Walnut



CE 5401 W
Sap Veneer Dark





Metal



Project: Theatre in Campus
Client: Kasem Bundit University, Bangkok Thailand
Interior Designer: Mr. Wutti Nimpanich



MR 9903 M
Smoked Mirror



MR 9901 M
Mirror



BR 9950 M
Silver Brushed



MT 9951 M
Silver Matt



MR 9902 M
Gold Mirror



BR 9952 M
Gold Brushed



BR 9953 M
Bronze Brushed





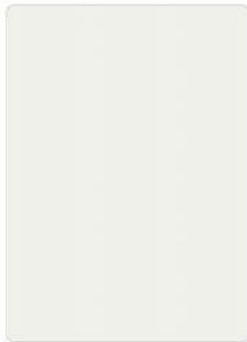
Spotless

Experience the marvels of modern technology and fine craftsmanship

Spotless laminates are developed using high-end resources that provides for super matt and soft to touch finish that assures a captivating appeal and an awe-inspiring display of peerless class. It can naturally resist fingerprints and bacteria growth due to its sound foundation. Abrasion resistance too is an admirable feature of Spotless due to which they become ideal for various interior application settings.

-  Anti-fingerprint
-  Extremely Safe
-  Abrasion Resistant
-  Resistance to Heat
-  Super Matte
-  Anti-Bacterial
-  Impact Resistance
-  Lightfastness
-  Soft Touch
-  Care-Free

Size: 1220mm x 2440mm x 1.0mm



AF 8806 S
Chiffon White



AF 8807 S **NEW**
Sandstone



AF 8809 S **NEW**
Saddle



AF 8810 S **NEW**
Storm



AF 8802 S
Pewter



AF 8808 S **NEW**
Mink



AF 8803 S
Magma



AF 8801 S
Onyx



Maintenance Guide

Virgo® Laminates are designed to last a long time with proper care and usage. Below are some guidelines on how to maintain and care for your laminates.

Selecting the correct finish

We recommend to consider the application and use of the surface before selecting the laminate. Standard General Purpose Grade laminates are suitable for most interior use. Textured surfaces can be used for both vertical and horizontal applications. Gloss and metal laminates are not recommended for heavy-duty applications such as counter tops.

Cleaning

Virgo® Laminates are very easy to maintain and clean. For cleaning of stains and routine laminate maintenance, use a clean, damp, non-abrasive cloth and mild detergent or soap. Avoid the use of strong chemicals such as bleach, organic detergents and abrasive sponges that can discolour and scratch the laminate surface. For grease stains or attached dirt, clean with a 50-50 mix of solvent and alcohol using a clean, non-abrasive cloth. This way, the laminate will be free of stains without affecting the original colour and design.

Protection against scratch and impact

Virgo® Laminates are resistant to scratches and impact under normal use conditions. If any cutting activities are to be done on the laminate surface, an appropriate cutting board should be used to avoid damage to the laminate surface. It is also not recommended to chop, slice, pound or hammer directly on the laminate.

Protection against heat and light

Virgo® Laminates are manufactured for indoor applications and should not be exposed to sunlight or temperatures above 130°C. When placing hot objects such as frying pans, pots, and iron, use a trivet or protective insulated material to protect the laminate surface against direct heated objects.

Protection against chemicals

Virgo® High Pressure Laminates are not recommended for laboratory applications where oxidized chemicals, alkali and strong acids are used. Cleaning agents that contain acid, alkali or sodium hypochlorite should not be used for maintaining the laminate surface.

Index

Article Code	Article Name	Page	Article Code	Article Name	Page	Article Code	Article Name	Page
CSS 931 W	Fumed Willow Light	18	SH 1409 S	Frosty White	4	DM 5106 S	Soft White	1
SMT 931 W	Fumed Willow Light	18	SHG 1409 S	Frosty White	4	SMT 5106 S	Soft White	3
CSS 932 W	Fumed Willow Dark	18	DM 1504 S	Rosy Pink	2	SF 5116 W	Marin Beech	22
SMT 932 W	Fumed Willow Dark	18	DM 1505 S	Strawberry	2	CE 5401 W	Sap Veneer Dark	32
DM 1001 S	Pearl Grey	1	DM 1507 S	Super Green	2	SF 5504 W	Cherry Bavaria	22
SHG 1001 S	Pearl Grey	4	DM 1509 S	Lilac	2	SF 5507 W	Bavarian Beech	22
TN 1001 S	Pearl Grey	5	DM 1517 S	Para Green	2	JW 5600 W	Bleached Cyprus	20
DM 1002 S	Coffee	1	DM 1525 S	Dim Orange	2	NV 5601 P	Bruno Kamala	28
LA 1002 S	Coffee	5	DM 1527 S	Olive Green	2	NV 5602 P	Natural Kamala	28
DM 1005 S	Maroon	2	DM 1709 S	New Frosty White	1	NV 5603 P	Bianco Kamala	28
CE 1006 S	Black	32	DM 1921 S	Chocklet	1	DM 5621 W	Vanila Groven Oak	17
CO 1006 S	Black	5	DM 1922 S	Dark Green	1	DM 5622 W	Groven Oak	17
DM 1006 S	Black	2	DM 1923 S	Silk Green	1	NV 5624 W	Platinum	13
FE 1006 S	Black	5	GLX-1 1923 S	Silk Green	31	NV 5625 W	Crestwood	13
GLX-1 1006 S	Black	31	LA 1923 S	Silk Green	5	NV 5626 W	Cayman	13
LA 1006 S	Black	5	SH 1923 S	Silk Green	4	NV 5628 W	Emory Oak	14
MH 1006 S	Black	3	SMT 1923 S	Silk Green	3	NV 5629 W	Laurel Oak	14
SH 1006 S	Black	4	DM 1929 S	Poris Sutte	1	NV 5630 W	Muller Oak	14
SHG 1006 S	Black	4	DM 1931 S	Poris Wood	1	NV 5633 W	Silverbrook	13
SMT 1006 S	Black	3	SMT 1931 S	Poris Wood	3	NV 5636 W	Valley Oak	14
TN 1006 S	Black	5	DM 1934 S	Mission White	1	NV 5639 W	Willow Oak	14
DM 1018 S	Misty Blue	2	SHG 1934 S	Mission White	4	DM 5640 W	Sculpt Nogal	24
DM 1025 S	Orange	2	SMT 1934 S	Mission White	3	DM 5641 W	Balmy Nogal	24
DM 1027 S	Glorious Green	2	TN 1934 S	Mission White	5	DM 5642 W	Mastic Nogal	24
DM 1028 S	Parker Blue	2	DM 1935 S	Fog	1	DM 5643 W	Misty Nogal	24
DM 1035 S	Malta	2	SHG 1935 S	Fog	4	HZ 5646 W	Tulip Oak HZ	23
DM 1037 S	Parrot Green	2	TN 1935 S	Fog	5	HZ 5647 W	Dalton Oak HZ	23
DM 1038 S	Royal Blue	2	DM 1936 S	Graphite	1	HZ 5648 W	Costa Oak HZ	23
DM 1045 S	Blood Red	2	MH 1936 S	Graphite	3	HZ 5649 W	Lino Oak HZ	23
DM 1047 S	Bottle Green	2	SHG 1936 S	Graphite	4	NV 5661 W	Scara Walnut	19
DM 1048 S	Stain Blue	2	SMT 1936 S	Graphite	3	NV 5662 W	Veltech Walnut	19
DM 1055 S	Mash	2	TN 1936 S	Graphite	5	NV 5663 W	Corell Walnut	19
DM 1057 S	Army Green	2	DM 1937 S	Kashmir	1	NV 5664 W	Tulip Walnut	19
DM 1058 S	Chel Park Blue	2	SHG 1937 S	Kashmir	4	NV 5754 W	Splendura	20
DM 1063 S	Light Yellow	2	SMT 1937 S	Kashmir	3	NV 5761 W	Noce	19
DM 1067 S	Sambre	2	TN 1937 S	Kashmir	5	GO 5804 W	Cyprus Dyed	20
DM 1068 S	Navy Blue	2	DM 1938 S	Pumice	1	NV 5804 W	Cyprus Dyed	20
DM 1073 S	Golden Yellow	2	SHG 1938 S	Pumice	4	NV 5805 W	Cyprus Cedar	20
DM 1075 S	Dark Cronch	2	SMT 1938 S	Pumice	3	IA 5808 W	Indian Walnut	19
DM 1078 S	Purple	2	TN 1939 S	Nocturne	5	CE 5809 W	Fume Walnut	32
DM 1083 S	Marigold	2	DM 1941 S	Neo Cool White	1	NV 5811 W	Classic Walnut	19
DM 1088 S	Lavender	2	DM 1942 S	Cool White	1	DM 6302 W	Artcasia	24
DM 1098 S	Poppy	2	SHG 1942 S	Cool White	4	DM 6303 W	Artcasia Brown	24
DM 1101 S	Grey	1	DM 1944 S	Mocha	1	CE 6316 P	Sandy Fabricano	32
SH 1101 S	Grey	4	SMT 1944 S	Mocha	3	CE 6319 P	Fabricano	32
DM 1209 S	Super White	1	DM 1945 S	Sandal	1	SHG 6323 P	Maycair Marbal	25
DM 1245 S	Bright Red	2	DM 1946 S	Sunset Point	1	SMT 6323 P	Maycair Marbal	25
SH 1245 S	Bright Red	4	DM 1947 S	Aspen Gold	1	SHG 6331 P	Tortilla Veneto	26
DM 1303 S	Techno Ivory	1	SF 5029 W	Milan Beech	22	SMT 6331 P	Tortilla Veneto	26
GLX-1 1303 S	Techno Ivory	31	DM 5101 S	Anchor	1	SHG 6332 P	Crema Veneto	26
DM 1309 S	Prime White	1	MH 5101 S	Anchor	3	SMT 6332 P	Crema Veneto	26
SHG 1309 S	Prime White	4	DM 5102 S	Pecan	1	SHG 6333 P	Ossidi Veneto	26
CE 1409 S	Frosty White	32	MH 5102 S	Pecan	3	SMT 6333 P	Ossidi Veneto	26
DM 1409 S	Frosty White	1	DM 5103 S	Powder Blue	2	SHG 6334 P	Stoffa Veneto	26
GLX-1 1409 S	Frosty White	31	DM 5104 S	Pure White	1	SMT 6334 P	Stoffa Veneto	26
LA 1409 S	Frosty White	5	DM 5105 S	Snow White	1	SHG 6336 P	Black Greystone	25

Article Code	Article Name	Page	Article Code	Article Name	Page	Article Code	Article Name	Page
SMT 6336 P	Black Greystone	25	ST 6878 P	Brown Cement Stone	27	DM 8105 S	Ash Grey	1
NV 6400 W	Sham Teak	15	ST 6879 P	Portoro	27	DM 8106 S	Camel	1
DM 6403 W	Coastrica Teak	15	ST 6880 P	Black Portoro	27	DM 8107 S	Jet Grey	1
DM 6405 W	Burma Teak	15	GO 6881 W	Tulip Dyed	22	DM 8108 S	Oyster	1
DM 6406 W	Gana Teak	15	GO 6882 W	Tulip Bleach	22	SMT 8108 S	Oyster	3
SMT 6408 P	Silver Terrazzo	27	FO 6901 W	American Oak	11	DM 8411 W	Rami Ash	24
SMT 6409 P	Grey Terrazzo	27	FO 6902 W	Fume Oak	11	DM 8412 W	Rami Ash Brown	24
DM 6410 W	Resara Oak	17	FO 6903 W	Bleached Oak	11	DM 8413 W	Rami Ash Natural	24
DM 6411 W	Rost Oak	17	CA 6911 W	White Ash	9	DM 8416 W	Meta Oak	22
DM 6412 W	Zobi Oak	17	CA 6912 W	European Ash	9	DM 8418 W	Seta Oak	22
NV 6415 W	Sino Oak	17	CA 6913 W	Symphony Ash	9	NV 8433 W	Palasanto Teak	15
NV 6416 W	Mayo Oak	17	CO 6941 W	Grand Petraea	10	NV 8434 W	Palasanto	15
NV 6417 W	Sero Oak	17	CO 6942 W	Nature Petraea	10	DM 8441 W	Fume Cane	22
NV 6418 W	Zeazar Oak	17	CO 6943 W	Burnt Petraea	10	DM 8442 W	Oriental Cane	22
NV 6426 P	Denim Brown	30	PW 6951 W	Omni Wood	12	NV 8446 W	Ripped Wood	15
NV 6427 P	Denim Blue	30	PW 6952 W	Amazon	12	JW 8456 W	Koris Wood	21
NV 6428 P	Denim Beige	30	PW 6953 W	Amber	12	JW 8457 W	Gamoni Wood	21
DM 6431 P	Zyco Fabric	29	FE 6961 W	Naturale	7	CS 8461 W	Clear Chestnut	18
DM 6432 P	Kesaco Fabric	29	FE 6962 W	Macchiato	7	GO 8461 W	Clear Chestnut	18
DM 6434 P	Rosco Fabric	29	FE 6963 W	Fumo	7	CS 8462 W	Chest Nut	18
SYCA 6446 P	Pure Silk	29	PA 6971 W	Sitka Ash	8	GO 8462 W	Chest Nut	18
SYCA 6447 P	Silk	29	PA 6972 W	Houston Ash	8	ZBVT 8464 W	Zoriasta Teak	21
DM 6451 W	Jamaica Walnut	19	PA 6973 W	Memphis Ash	8	ZBVT 8468 W	Comby Walnut	21
DM 6452 W	Marcello Walnut	19	PT 6981 W	Alava	6	DM 8472 W	Durgish Elm	16
DM 6453 W	Rivira Walnut	19	PT 6982 W	Segovia	6	DM 8473 W	Coris Elm	16
DM 6454 W	Balmy Walnut	19	SHG 7129 W	Fito Rambas	21	NV 8496 W	Ruzo Walnut	19
ST 6461 P	Davido	27	SHG 7130 W	Goyarambas	21	AF 8801 S	Onyx	34
ST 6462 P	Parido	27	SC 7149 W	Smoke Saw Cut	15	AF 8802 S	Pewter	34
CS 6466 W	Penga Teak	21	SC 7150 W	Saw Cut	15	AF 8803 S	Magma	34
CS 6467 W	Zigo Teak	21	CN 7501 P	Grey Concrete	28	AF 8806 S	Chiffon White	34
NV 6471 P	Kekmi Fabric	30	CN 7503 P	Expose Concrete	28	AF 8807 S	Sandstone	34
DM 6476 W	Zerino Elm	16	CN 7504 P	Natural Concrete	28	AF 8808 S	Mink	34
CN 6481 P	Cement Concrete	28	NV 7506 W	Sarin Walnut	19	AF 8809 S	Saddle	34
CN 6483 P	Concrete	28	NV 7602 W	Natural Parquet	21	AF 8810 S	Storm	34
IA 6491 W	Cream Ash	18	NV 7603 W	Walnut Parquet	21	MR 9901 M	Mirror	33
IA 6492 W	Pearl Ash	18	DM 7604 W	Sapporo Elm	16	MR 9902 M	Gold Mirror	33
NV 6494 W	Austin Elm	14	DM 7605 W	Gifu Elm	16	MR 9903 M	Smoked Mirror	33
NV 6495 W	Konrad Elm	14	NV 7607 W	Bonita Ash	14	IA 9911 W	Beafort Ash	18
NV 6496 W	Otto Elm	14	NV 7608 W	Oregon Ash	14	NV 9914 W	Ocer Saped Brown	20
HZ 6501 W	Bargish Oak	23	CS 7655 W	Grigio Elm	16	BR 9950 M	Silver Brushed	33
HZ 6502 W	Satus Bargish Oak	23	CS 7656 W	Bruno Elm	16	MT 9951 M	Silver Matt	33
HZ 6503 W	Pato Bargish Oak	23	CS 7657 W	Marrone Elm	16	BR 9952 M	Gold Brushed	33
HZ 6504 W	Sras Bargish Oak	23	DM 7658 W	Glasgow Elm	16	BR 9953 M	Bronze Brushed	33
CS 6526 W	White Tandy	18	DM 7659 W	Irvine Elm	16	SF 9975 P	Pearl White	31
CS 6527 W	Slate Tandy	18	DM 7660 W	Wishaw Elm	16	SHG 9975 P	Pearl White	31
SC 6531 P	Stoffa Fabricano	30	DM 7661 W	Tampico Walnut	20	SF 9976 P	Pearl Silver	31
SC 6532 P	Black Fabricano	30	DM 7662 W	Saltillo Walnut	20	SHG 9976 P	Pearl Silver	31
SC 6533 P	Winter Fabricano	30	DM 7663 W	Morelia Walnut	20	SF 9977 P	Pearl Bronze	31
NV 6536 W	Drik Oak	17	NV 7901 W	Turin Noce	20	SHG 9977 P	Pearl Bronze	31
NV 6613 W	English Ash	14	NV 7902 W	Verona Noce	20	SF 9978 P	Pearl Black	31
NV 6614 W	Velvet Ash	14	CS 7903 W	Bianco Teak	15	SHG 9978 P	Pearl Black	31
NV 6731 W	San Natural	17	CS 7904 W	Hickory Teak	15			
NV 6732 W	Sangray	20	DM 8102 S	Blush	2			
JW 6758 W	Canyon Zephyr Dark	15	DM 8103 S	Cool Grey	1			
SC 6873 P	Sandy Fabricano	30	DM 8104 S	Pebble	1			
ST 6877 P	Cement Stone	27	MH 8104 S	Pebble	3			

VIRGO® Digital

Digital Print Laminates by Virgo® allow designers to explore customised graphics to be printed and produced in a High Pressure Laminate. They are as diverse as the applications for which they are used for.



Technical Specification

Grade: Standard General Purpose Grade, other grades are available on indent basis

Size: 1220mm x 2440mm

Thickness: 0.8mm unless otherwise specified

All Virgo® Laminates conform to the requirements of BS EN 438.

Certifications:

Singapore Green Label



042-057-3032

Environmentally Improved Low Emission Low Toxicity

ISO 14001



CE Mark



GreenGuard Gold



ISO 9001



Our Offices

SINGAPORE

Virgo Pacific Pte Ltd
No. 7 Gambas Crescent
#01-27 Ark@Gambas
Singapore 757087
E: sg@virgoasia.com

MALAYSIA – JOHOR

Virgo Pacific Sdn Bhd
No. 5, Jalan Mutiara Emas
5/25, Taman Mount Austin,
81100 Johor Bahru,
Johor, Malaysia
E: my@virgoasia.com

MALAYSIA – SELANGOR

Virgo Pacific Sdn Bhd
14 Jalan TSB2,
Taman Industri
Sungai Buloh,
47000 Sungai Buloh,
Selangor, Malaysia
E: my@virgoasia.com

THAILAND

Virgo Pacific (Thailand)
Co., Ltd.
110/1 Moo 7 Lahan,
Bang Bua Thong
Nonthaburi,
Thailand 11110
E: th@virgoasia.com

Corporate Office:

D-117 Okhla Industrial Area
Phase 1 New Delhi 110020

Head Office:

Plot No. 828 Industrial Area
Phase 2
Chandigarh 160002

Contact us :

enquiry@virgoasia.com
+65-8466 4444   



AUTHORISED DEALER:

